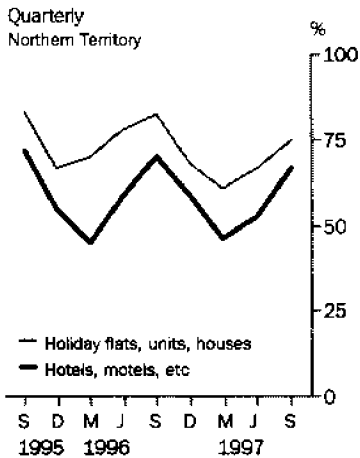


# TOURIST ACCOMMODATION

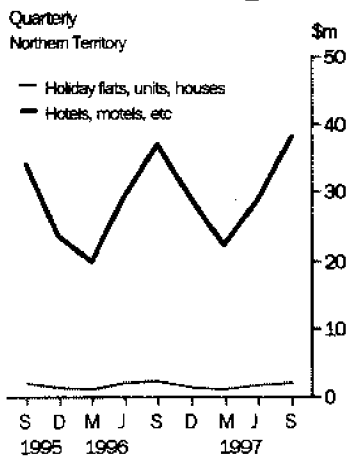
**NORTHERN  
TERRITORY**

EMBARGO: 11:30AM (CANBERRA TIME) FRI 5 DEC 1997

## Occupancy rates



## Accommodation takings



## SEPTEMBER QTR KEY FIGURES

	Sep Qtr 96	Sep Qtr 97	change
<b>Hotels, motels and guest houses</b>			
Rooms available (no.)	5 708	6 202	8.7 %
Room occupancy rate (%)	70.4	66.7	-3.7 pts
Takings from accommodation (\$'000)	37 247	38 291	2.8 %
<b>Holiday flats, units and houses</b>			
Units, etc. available (no.)	319	334	4.7 %
Unit occupancy rate (%)	82.2	75.1	-7.1 pts
Takings from accommodation (\$'000)	2 214	2 115	-4.5 %
<b>Caravan parks</b>			
Sites, cabins, etc. available (no.)	8 750	9 253	5.7 %
Site occupancy rate (%)	43.3	41.3	-2.0 pts
Takings from accommodation (\$'000)	5 319	5 708	7.3 %
<b>Visitor hostels</b>			
Bed spaces available (no.)	3 084	3 283	6.5 %
Bed occupancy rate (%)	61.0	60.2	-0.8 pts
Takings from accommodation (\$'000)	2 388	2 719	13.9 %

## SEPTEMBER QTR KEY POINTS

### CAPACITY INCREASES OUTPACE DEMAND

- Rooms available in hotels, motels and guest houses in the Northern Territory increased by 8.7%, in September quarter 1997 compared with September quarter 1996, while demand in terms of room nights occupied increased by 2.9%. The room occupancy rate therefore fell by 3.7 percentage points to 66.7%. The capacity increase reflected the opening of four establishments during the year in Darwin City, where the room occupancy rate fell from 82.8% to 73.9%.
- Occupancy rates also decreased for other accommodation types. For caravan parks and for visitor hostels, capacity available increased more than demand. For holiday flats, units and houses, capacity available increased while demand fell.

### ACCOMMODATION TAKINGS MOSTLY UP

- Takings from accommodation increased in September quarter 1997 compared with September quarter 1996 for each establishment type other than holiday flats, units and houses.

## INQUIRIES

- For further information about these and related statistics, contact Glenn Collins on 07 3222 6345, or any ABS Office.

# NOTES

**FORTHCOMING ISSUES**

*ISSUE (Quarter)*

*EXPECTED RELEASE DATE*

December 1997

6 March 1998

.....

**CHANGES TO THE SURVEY  
AND CESSATION OF  
STATE PUBLICATIONS**

As a result of budget cuts to the ABS, the Survey of Tourist Accommodation (STA) will be significantly cut back from the March quarter 1998. The State and Territory *Tourist Accommodation* publications (Catalogue Nos. 8635.1 to 8635.8) will be discontinued because of the changes to the Survey of Tourist Accommodation which will be implemented from the March quarter 1998. The December quarter 1997 issues will be the last. There will also be changes to the publication *Tourist Accommodation, Australia* (Catalogue No. 8635.0) which will no longer contain data on caravan parks, holiday flats, units and houses and visitor hostels. However, it will include serviced apartments as a separate category and will contain State and some regional data.

The ABS has consulted with a number of interested users to determine the future form of the STA. As a result, the future collection strategy for the STA will consist of three major components.

The first component of the STA strategy is an ongoing quarterly survey with a scope of hotels, motels and guest houses with facilities in most rooms, and serviced apartments. Establishments with fewer than 15 rooms or units will be excluded. The first release of this data will be in *Tourist Accommodation, Australia* (8635.0) in June 1998 representing data for the March quarter of that year. This publication will contain some regional data as well as data for States, Territories and Australia. Further small geographic area data may be available on request. A charge may be made for this information.

The second component of the strategy is a triennial limited scope collection of significant caravan parks, visitor hostels and remaining holiday flats, units and houses, commencing with a year 2000 reference year.

The third STA component is the compilation and dissemination of annual accommodation counts of number of establishments and capacity data in respect of the current scope of the STA which is:

- hotels, motels and guest houses with facilities with 5 or more rooms,
- holiday flats, units and houses which are operated by owners, managers or real estate agents who have sole letting rights to at least 5 flats, units or houses for short term letting,
- caravan parks, and
- visitor hostels.

The counts are expected to be published in the December quarter issue of *Tourism Indicators, Australia* (Catalogue No. 8634.0).

If you have any queries about the content of these publications, please contact Debra McDonald on telephone: 07-3222-6118, fax: 07-3222-6284 or Internet: [debra.mcdonald@abs.gov.au](mailto:debra.mcdonald@abs.gov.au). For any queries about your subscriptions, please call the Subscription Services Freecall hotline on 1300 366 323.

.....

ZIA ABBASI

Regional Director, Northern Territory

TABLE 1 — SUMMARY OF HOTELS, MOTELS AND GUEST HOUSES WITH FACILITIES, NORTHERN TERRITORY

Particulars	Unit	Quarter ended				Year ended			
		June 1996	September 1996	December 1996	March 1997	June 1997	September 1997	September 1996	September 1997
<b>LICENSED HOTELS WITH FACILITIES</b>									
Establishments	no.	31	31	31	32	33	34	..	..
Guest rooms	no.	2,012	2,045	2,046	2,245	2,386	2,399	..	..
Bed spaces	no.	5,905	5,822	5,811	6,156	6,549	6,865	..	..
Employment (persons)	no.	2,293	2,328	2,042	2,049	2,217	2,073	..	..
Room nights occupied	no.	110,744	131,458	113,611	93,185	114,594	146,294	447,940	467,684
Room occupancy rate	per cent	60.5	69.9	60.4	49.5	52.8	66.3	60.3	57.4
Guest nights	no.	177,458	219,822	181,634	149,687	181,804	248,563	731,348	761,688
Bed occupancy rate	per cent	33.0	41.0	34.0	28.4	30.5	39.4	34.1	33.3
Guest arrivals	no.	86,360	118,561	107,085	85,481	93,076	123,560	384,490	409,202
Average length of stay	days	2.1	1.9	1.7	1.8	2.0	2.0	1.9	1.9
Takings from accommodation	\$'000	13,807	17,160	13,881	11,065	13,997	18,120	54,246	57,063
<b>MOTELS AND GUEST HOUSES WITH FACILITIES</b>									
Establishments	no.	68	68	67	68	69	69	..	..
Guest rooms	no.	3,560	3,663	3,598	3,728	3,799	3,803	..	..
Bed spaces	no.	10,689	11,120	10,918	11,245	11,389	11,374	..	..
Employment (persons)	no.	1,380	1,437	1,266	1,312	1,404	1,414	..	..
Room nights occupied	no.	184,574	238,125	188,885	145,334	182,061	234,117	716,945	750,397
Room occupancy rate	per cent	57.0	70.7	57.4	44.7	52.7	66.9	55.5	55.6
Guest nights	no.	328,278	435,132	326,994	248,811	306,845	420,281	1,264,146	1,302,931
Bed occupancy rate	per cent	33.7	42.5	32.7	25.2	29.6	40.2	32.4	32.0
Guest arrivals	no.	168,401	232,121	169,151	122,653	156,474	212,565	649,342	660,843
Average length of stay	days	1.9	1.9	1.9	2.0	2.0	2.0	1.9	2.0
Takings from accommodation	\$'000	15,369	20,087	15,000	11,118	15,020	20,171	55,878	61,308
<b>TOTAL HOTELS, MOTELS AND GUEST HOUSES WITH FACILITIES</b>									
Establishments	no.	99	99	98	100	102	103	..	..
Guest rooms	no.	5,572	5,708	5,644	5,973	6,185	6,202	..	..
Bed spaces	no.	16,594	16,942	16,729	17,401	17,938	18,239	..	..
Employment (persons)	no.	3,673	3,765	3,308	3,361	3,621	3,487	..	..
Room nights occupied	no.	295,318	369,583	302,496	238,519	296,655	380,411	1,164,885	1,218,081
Room occupancy rate	per cent	58.2	70.4	58.5	46.4	52.7	66.7	57.2	56.3
Guest nights	no.	505,736	654,954	508,628	398,498	488,649	668,844	1,995,494	2,064,619
Bed occupancy rate	per cent	33.5	42.0	33.2	26.3	29.9	39.9	33.0	32.5
Guest arrivals	no.	254,761	350,682	276,236	208,134	249,550	336,125	1,033,832	1,070,045
Average length of stay	days	2.0	1.9	1.8	1.9	2.0	2.0	1.9	1.9
Takings from accommodation	\$'000	29,176	37,247	28,881	22,183	29,017	38,291	110,124	118,371

TABLE 2—SUMMARY OF CARAVAN PARKS, NORTHERN TERRITORY

Particulars	Unit	Quarter ended				Year ended			
		June 1996	September 1996	December 1996	March 1997	June 1997	September 1997	September 1996	September 1997
<b>SHORT-TERM CARAVAN PARKS</b>									
Establishments	no.	60	59	58	57	59	62	..	..
Capacity									
On-site vans	no.	125	138	129	126	125	130	..	..
Other powered sites	no.	2,956	2,941	2,960	2,920	3,005	3,142	..	..
Unpowered sites	no.	3,259	3,228	3,071	3,051	3,224	3,476	..	..
Cabins, etc.	no.	207	249	271	215	343	303	..	..
<i>Total capacity</i>	<i>no.</i>	<i>6,547</i>	<i>6,556</i>	<i>6,431</i>	<i>6,312</i>	<i>6,697</i>	<i>7,051</i>	..	..
Sites occupied by long-term guests	no.	312	315	297	304	321	341	..	..
Other sites permanently reserved	no.	8	7	6	7	13	9	..	..
Employment (persons)	no.	297	280	263	225	281	327	..	..
Site nights occupied	no.	187,001	241,756	92,784	62,496	177,913	244,887	583,117	578,080
Site occupancy rate	per cent	31.4	40.1	15.8	11.0	29.2	38.0	24.4	24.0
Takings from accommodation	\$'000	2,944	3,962	1,552	1,060	3,109	4,407	9,422	10,128
<b>LONG-TERM CARAVAN PARKS</b>									
Establishments	no.	16	17	17	17	17	17	..	..
Capacity									
On-site vans	no.	181	178	177	182	184	176	..	..
Other powered sites	no.	1,405	1,428	1,418	1,434	1,434	1,437	..	..
Unpowered sites	no.	490	506	504	482	480	480	..	..
Cabins, etc.	no.	77	82	101	102	108	109	..	..
<i>Total capacity</i>	<i>no.</i>	<i>2,153</i>	<i>2,194</i>	<i>2,200</i>	<i>2,200</i>	<i>2,206</i>	<i>2,202</i>	..	..
Sites occupied by long-term guests	no.	688	699	608	681	662	712	..	..
Other sites permanently reserved	no.	5	3	11	10	11	16	..	..
Employment (persons)	no.	84	95	94	85	86	82	..	..
Site nights occupied	no.	91,729	106,752	75,044	66,533	85,156	105,367	345,839	332,100
Site occupancy rate	per cent	46.8	52.9	37.1	33.6	42.4	52.0	41.8	41.3
Takings from accommodation	\$'000	1,095	1,357	824	705	1,031	1,301	4,066	3,861
<b>TOTAL CARAVAN PARKS</b>									
Establishments	no.	76	76	75	74	76	79	..	..
Capacity									
On-site vans	no.	306	316	306	308	309	306	..	..
Other powered sites	no.	4,361	4,369	4,378	4,354	4,439	4,579	..	..
Unpowered sites	no.	3,749	3,734	3,575	3,533	3,704	3,956	..	..
Cabins, etc.	no.	284	331	372	317	451	412	..	..
<i>Total capacity</i>	<i>no.</i>	<i>8,700</i>	<i>8,750</i>	<i>8,631</i>	<i>8,512</i>	<i>8,903</i>	<i>9,253</i>	..	..
Sites occupied by long-term guests	no.	1,000	1,014	905	985	983	1,053	..	..
Other sites permanently reserved	no.	13	10	17	17	24	25	..	..
Employment (persons)	no.	381	375	357	310	367	409	..	..
Site nights occupied	no.	278,730	348,508	167,828	129,029	263,069	350,254	928,956	910,180
Site occupancy rate	per cent	35.2	43.3	21.2	16.8	32.5	41.3	28.9	28.3
Takings from accommodation	\$'000	4,039	5,319	2,376	1,765	4,140	5,708	13,489	13,989

TABLE 3 — SUMMARY OF HOLIDAY FLATS, UNITS AND HOUSES, NORTHERN TERRITORY

Particulars	Unit	Quarter ended				Year ended			
		June 1996	September 1996	December 1996	March 1997	June 1997	September 1997	September 1996	September 1997
Letting entities	no.	11	12	12	12	12	13	..	..
Flats, units and houses									
Single bedroom	no.	151	159	160	157	162	163	..	..
Multiple bedroom	no.	158	160	158	158	157	171	..	..
<i>Total flats, units and houses</i>	<i>no.</i>	<i>309</i>	<i>319</i>	<i>318</i>	<i>315</i>	<i>319</i>	<i>334</i>	<i>..</i>	<i>..</i>
Bed spaces	no.	1,212	1,224	1,223	1,223	1,228	1,287	..	..
Employment (persons) (a)	no.	68	69	70	70	67	70	..	..
Unit nights occupied	no.	21,882	24,135	19,933	17,173	19,336	23,063	83,273	79,505
Unit occupancy rate	per cent	77.8	82.2	68.1	60.6	66.6	75.1	74.4	67.7
Unit lettings	no.	4,923	6,216	4,391	3,474	4,130	6,809	18,258	18,804
Average length of stay	days	4.4	3.9	4.5	4.9	4.7	3.4	4.6	4.2
Takings from accommodation	\$'000	1,982	2,214	1,582	1,227	1,675	2,115	6,831	6,598

(a) Employment numbers exclude real estate agents and their employees.

TABLE 4 — SUMMARY OF VISITOR HOSTELS, NORTHERN TERRITORY

Particulars	Unit	Quarter ended				Year ended			
		June 1996	September 1996	December 1996	March 1997	June 1997	September 1997	September 1996	September 1997
Establishments	no.	34	34	34	34	34	34	..	..
Bed spaces	no.	2,987	3,084	3,024	3,166	3,276	3,283	..	..
Employment (persons)	no.	164	168	151	149	159	173	..	..
Guest nights	no.	156,672	172,938	125,602	107,311	139,877	181,737	558,055	554,527
Bed occupancy rate	per cent	57.6	61.0	45.1	37.7	46.9	60.2	52.3	47.7
Guest arrivals	no.	76,787	85,737	64,661	52,472	68,945	101,692	282,518	287,770
Average length of stay	days	2.0	2.0	1.9	2.0	2.0	1.8	2.0	1.9
Takings from accommodation	\$'000	2,177	2,388	1,722	1,517	2,053	2,719	7,506	8,010

TABLE 5 — HOTELS, MOTELS AND GUEST HOUSES WITH FACILITIES BY ESTABLISHMENT SIZE, NORTHERN TERRITORY

Particulars	Establishment size (number of rooms)						Northern Territory
	5-9	10-15	16-25	26-50	51-100	101+	
<b>ESTABLISHMENTS, CAPACITY AND EMPLOYMENT</b>							
<i>September quarter 1996—</i>							
Establishments	6	11	23	19	24	16	99
Guest rooms	41	132	483	733	1,789	2,530	5,708
Bed spaces	114	381	1,510	2,230	5,053	7,654	16,942
Employment (persons)	39	82	221	577	1,225	1,621	3,765
<i>September quarter 1997—</i>							
Establishments	6	12	22	19	26	18	103
Guest rooms	38	146	461	737	1,950	2,870	6,202
Bed spaces	100	437	1,431	2,180	5,339	8,752	18,239
Employment (persons)	39	91	209	444	1,204	1,500	3,487
<b>ROOM NIGHTS OCCUPIED</b>							
<i>September quarter 1996</i>	935	6,880	26,544	44,602	116,011	174,611	369,583
<i>1997—</i>							
July	296	2,284	8,856	15,480	43,984	66,659	137,559
August	306	2,151	7,930	14,285	41,632	67,393	133,697
September	228	1,614	6,072	11,408	34,150	55,683	109,155
<i>September quarter 1997</i>	830	6,049	22,858	41,173	119,766	189,735	380,411
<b>ROOM OCCUPANCY RATES (per cent)</b>							
<i>September quarter 1996</i>	24.8	56.7	59.7	66.1	70.5	75.0	70.4
<i>1997—</i>							
July	25.1	50.5	62.0	67.8	72.8	74.9	71.5
August	26.0	47.5	55.5	62.5	68.9	75.7	69.5
September	20.0	36.8	43.9	51.6	58.4	64.7	58.7
<i>September quarter 1997</i>	23.7	45.0	53.9	60.7	66.8	71.9	66.7
<b>GUEST NIGHTS</b>							
<i>September quarter 1996</i>	1,694	11,547	46,264	80,349	205,884	309,216	654,954
<i>1997—</i>							
July	546	4,304	15,821	30,504	83,047	115,159	249,381
August	500	3,816	13,309	25,660	73,872	115,295	232,452
September	390	3,052	11,925	20,066	59,671	91,907	187,011
<i>September quarter 1997</i>	1,436	11,172	41,055	76,230	216,590	322,361	668,844
<b>BED OCCUPANCY RATES (per cent)</b>							
<i>September quarter 1996</i>	16.2	32.9	33.3	39.2	44.3	43.9	42.0
<i>1997—</i>							
July	17.6	31.8	35.7	45.1	50.2	42.4	44.1
August	16.1	28.2	30.0	38.0	44.6	42.5	41.1
September	13.0	23.3	27.8	30.7	37.3	35.0	34.2
<i>September quarter 1997</i>	15.6	27.8	31.2	38.0	44.1	40.0	39.9
<b>GUEST ARRIVALS</b>							
<i>September quarter 1996</i>	1,594	6,745	20,495	46,168	111,033	164,647	350,682
<i>1997—</i>							
July	471	3,079	6,542	16,722	42,303	53,527	122,644
August	472	2,473	5,893	14,307	39,087	54,661	116,893
September	330	2,166	4,328	10,330	32,980	46,454	96,588
<i>September quarter 1997</i>	1,273	7,718	16,763	41,359	114,370	154,642	336,125
<b>AVERAGE LENGTH OF STAY (days)</b>							
<i>September quarter 1996</i>	1.1	1.7	2.3	1.7	1.9	1.9	1.9
<i>September quarter 1997</i>	1.1	1.4	2.4	1.8	1.9	2.1	2.0
<b>TAKINGS FROM ACCOMMODATION (\$'000)</b>							
<i>September quarter 1996</i>	52	446	1,690	2,904	9,389	22,766	37,247
<i>1997—</i>							
July	15	133	583	1,137	3,637	8,359	13,864
August	15	113	548	1,039	3,568	8,598	13,881
September	11	80	366	763	2,698	6,629	10,546
<i>September quarter 1997</i>	41	325	1,496	2,939	9,903	23,586	38,291

TABLE 6A — HOTELS, MOTELS AND GUEST HOUSES WITH FACILITIES BY STAR GRADING BY STATISTICAL DIVISION, NORTHERN TERRITORY

Particulars	Darwin (SD)				Northern Territory - Balance (SD)			
	Star grading			Total	Star grading			Total
	2	3, 4 and 5	Ungraded and 1		2	3, 4 and 5	Ungraded and 1	
<b>ESTABLISHMENTS, CAPACITY AND EMPLOYMENT</b>								
<i>September quarter 1996—</i>								
Establishments	7	12	9	28	23	25	23	71
Guest rooms	318	1,393	277	1,988	1,018	2,218	484	3,720
Bed spaces	951	3,880	787	5,618	3,040	6,857	1,427	11,324
Employment (persons)	94	1,401	88	1,583	581	1,323	278	2,182
<i>September quarter 1997—</i>								
Establishments	7	12	13	32	19	26	26	71
Guest rooms	320	1,395	757	2,472	845	2,151	734	3,730
Bed spaces	960	3,839	2,160	6,959	2,491	6,556	2,233	11,280
Employment (persons)	76	1,101	247	1,424	461	1,244	358	2,063
<b>ROOM NIGHTS OCCUPIED</b>								
<i>September quarter 1996</i>	24,529	106,336	20,544	151,409	54,909	141,086	22,179	218,174
<i>1997—</i>								
July	7,696	35,718	18,094	61,508	16,271	48,294	11,486	76,051
August	7,535	35,559	17,677	60,771	15,171	47,185	10,570	72,926
September	5,282	28,143	12,265	45,690	12,674	41,826	8,965	63,465
<i>September quarter 1997</i>	20,513	99,420	48,036	167,969	44,116	137,305	31,021	212,442
<b>ROOM OCCUPANCY RATES (per cent)</b>								
<i>September quarter 1996</i>	83.8	83.0	80.6	82.8	58.6	69.1	49.8	63.7
<i>1997—</i>								
July	77.6	82.6	77.1	80.3	62.1	72.4	50.5	65.8
August	76.0	82.2	75.3	79.3	57.9	70.8	46.5	63.1
September	55.0	67.2	54.0	61.6	50.0	64.8	40.7	56.7
<i>September quarter 1997</i>	69.7	77.5	69.0	73.9	56.7	69.4	45.9	61.9
<b>GUEST NIGHTS</b>								
<i>September quarter 1996</i>	44,442	180,864	27,375	252,681	102,646	259,375	40,252	402,273
<i>1997—</i>								
July	14,287	58,991	29,518	102,796	30,216	95,482	20,887	146,585
August	13,630	58,569	27,563	99,762	27,744	86,991	17,955	132,690
September	8,537	44,480	18,922	71,939	22,877	77,684	14,511	115,072
<i>September quarter 1997</i>	36,454	162,040	76,003	274,497	80,837	260,157	53,353	394,347
<b>BED OCCUPANCY RATES (per cent)</b>								
<i>September quarter 1996</i>	50.8	50.7	37.8	48.9	36.7	41.1	30.7	38.6
<i>1997—</i>								
July	48.0	49.6	44.1	47.7	39.1	47.0	30.2	41.9
August	45.8	49.2	41.2	46.2	35.9	42.8	25.9	37.9
September	29.6	38.6	29.2	34.5	30.6	39.5	21.7	34.0
<i>September quarter 1997</i>	41.3	45.9	38.2	42.9	35.3	43.1	26.0	38.0
<b>GUEST ARRIVALS</b>								
<i>September quarter 1996</i>	14,211	83,744	13,823	111,778	71,193	143,429	24,282	238,904
<i>1997—</i>								
July	5,568	23,712	8,368	37,648	19,141	53,172	12,683	84,996
August	5,465	25,011	7,637	38,113	16,778	50,854	11,148	78,780
September	3,597	20,580	5,935	30,112	12,782	44,527	9,167	66,476
<i>September quarter 1997</i>	14,630	69,303	21,940	105,873	48,701	148,553	32,998	230,252
<b>AVERAGE LENGTH OF STAY (days)</b>								
<i>September quarter 1996</i>	3.1	2.2	2.0	2.3	1.4	1.8	1.7	1.7
<i>September quarter 1997</i>	2.5	2.3	3.5	2.6	1.7	1.8	1.6	1.7
<b>TAKINGS FROM ACCOMMODATION (\$'000)</b>								
<i>September quarter 1996</i>	1,869	13,628	1,118	16,615	3,734	15,646	1,252	20,632
<i>1997—</i>								
July	640	4,246	1,616	6,503	1,149	5,297	916	7,362
August	607	4,306	1,653	6,566	1,117	5,354	843	7,315
September	383	3,087	1,079	4,550	848	4,485	663	5,996
<i>September quarter 1997</i>	1,630	11,639	4,349	17,619	3,114	15,136	2,422	20,672

TABLE 6B — HOTELS, MOTELS AND GUEST HOUSES WITH FACILITIES BY STAR GRADING,  
NORTHERN TERRITORY

Particulars	Licensed hotels with facilities	Motels and guest houses	Star grading					Ungraded	Northern Territory
			1	2	3	4 and 5			
ESTABLISHMENTS, CAPACITY AND EMPLOYMENT									
<i>September quarter 1996—</i>									
Establishments	31	68	14	30	31	6	18	99	
Guest rooms	2,045	3,663	328	1,336	2,548	1,063	433	5,708	
Bed spaces	5,822	11,120	952	3,991	7,888	2,849	1,262	16,942	
Employment (persons)	2,328	1,437	171	675	1,245	1,479	195	3,765	
<i>September quarter 1997—</i>									
Establishments	34	69	8	26	30	8	31	103	
Guest rooms	2,399	3,803	122	1,165	2,428	1,118	1,369	6,202	
Bed spaces	6,865	11,374	340	3,451	7,430	2,965	4,053	18,239	
Employment (persons)	2,073	1,414	83	537	1,162	1,183	522	3,487	
ROOM NIGHTS OCCUPIED									
<i>September quarter 1996</i>	<i>131,458</i>	<i>238,125</i>	<i>16,722</i>	<i>79,438</i>	<i>184,086</i>	<i>63,336</i>	<i>26,001</i>	<i>369,583</i>	
<i>1997—</i>									
July	51,801	85,758	1,777	23,967	60,123	23,889	27,803	137,559	
August	52,420	81,277	1,625	22,706	58,943	23,801	26,622	133,697	
September	42,073	67,082	1,153	17,956	49,496	20,473	20,077	109,155	
<i>September quarter 1997</i>	<i>146,294</i>	<i>234,117</i>	<i>4,555</i>	<i>64,629</i>	<i>168,562</i>	<i>68,163</i>	<i>74,502</i>	<i>380,411</i>	
ROOM OCCUPANCY RATES (per cent)									
<i>September quarter 1996</i>	<i>69.9</i>	<i>70.7</i>	<i>55.4</i>	<i>64.6</i>	<i>78.5</i>	<i>64.8</i>	<i>65.3</i>	<i>70.4</i>	
<i>1997—</i>									
July	69.7	72.7	47.0	66.4	79.9	68.9	65.5	71.5	
August	70.5	68.9	43.0	62.9	78.3	68.7	62.7	69.5	
September	58.5	58.8	31.5	51.4	68.0	61.0	48.9	58.7	
<i>September quarter 1997</i>	<i>66.3</i>	<i>66.9</i>	<i>40.6</i>	<i>60.3</i>	<i>75.5</i>	<i>66.3</i>	<i>59.2</i>	<i>66.7</i>	
GUEST NIGHTS									
<i>September quarter 1996</i>	<i>219,822</i>	<i>435,132</i>	<i>29,857</i>	<i>147,088</i>	<i>339,476</i>	<i>100,763</i>	<i>37,770</i>	<i>654,954</i>	
<i>1997—</i>									
July	90,365	159,016	3,137	44,503	113,555	40,918	47,268	249,381	
August	89,993	142,459	2,754	41,374	105,985	39,575	42,764	232,452	
September	68,205	118,806	1,923	31,414	90,460	31,704	31,510	187,011	
<i>September quarter 1997</i>	<i>248,563</i>	<i>420,281</i>	<i>7,814</i>	<i>117,291</i>	<i>310,000</i>	<i>112,197</i>	<i>121,542</i>	<i>668,844</i>	
BED OCCUPANCY RATES (per cent)									
<i>September quarter 1996</i>	<i>41.0</i>	<i>42.5</i>	<i>34.1</i>	<i>40.1</i>	<i>46.8</i>	<i>38.4</i>	<i>32.5</i>	<i>42.0</i>	
<i>1997—</i>									
July	42.5	45.1	29.8	41.6	49.3	44.5	37.6	44.1	
August	42.3	40.4	26.1	38.7	46.0	43.1	34.0	41.1	
September	33.1	34.8	18.9	30.3	40.6	35.6	25.9	34.2	
<i>September quarter 1997</i>	<i>39.4</i>	<i>40.2</i>	<i>25.0</i>	<i>36.9</i>	<i>45.4</i>	<i>41.1</i>	<i>32.6</i>	<i>39.9</i>	
GUEST ARRIVALS									
<i>September quarter 1996</i>	<i>118,561</i>	<i>232,121</i>	<i>18,239</i>	<i>85,404</i>	<i>173,401</i>	<i>53,772</i>	<i>19,866</i>	<i>350,682</i>	
<i>1997—</i>									
July	43,302	79,342	1,579	24,709	57,900	18,984	19,472	122,644	
August	44,490	72,403	1,501	22,243	56,397	19,468	17,284	116,893	
September	35,768	60,820	1,144	16,379	48,550	16,557	13,958	96,588	
<i>September quarter 1997</i>	<i>123,560</i>	<i>212,565</i>	<i>4,224</i>	<i>63,331</i>	<i>162,847</i>	<i>55,009</i>	<i>50,714</i>	<i>336,125</i>	
AVERAGE LENGTH OF STAY (days)									
<i>September quarter 1996</i>	<i>1.9</i>	<i>1.9</i>	<i>1.6</i>	<i>1.7</i>	<i>2.0</i>	<i>1.9</i>	<i>1.9</i>	<i>1.9</i>	
<i>September quarter 1997</i>	<i>2.0</i>	<i>2.0</i>	<i>1.8</i>	<i>1.9</i>	<i>1.9</i>	<i>2.0</i>	<i>2.4</i>	<i>2.0</i>	
TAKINGS FROM ACCOMMODATION (\$'000)									
<i>September quarter 1996</i>	<i>17,160</i>	<i>20,087</i>	<i>801</i>	<i>5,603</i>	<i>19,228</i>	<i>10,045</i>	<i>1,570</i>	<i>37,247</i>	
<i>1997—</i>									
July	6,406	7,458	92	1,789	6,330	3,212	2,440	13,864	
August	6,651	7,230	85	1,724	6,344	3,317	2,411	13,881	
September	5,063	5,483	54	1,231	4,943	2,629	1,689	10,546	
<i>September quarter 1997</i>	<i>18,120</i>	<i>20,171</i>	<i>231</i>	<i>4,745</i>	<i>17,617</i>	<i>9,158</i>	<i>6,540</i>	<i>38,291</i>	



TABLE 7 — HOTELS, MOTELS AND GUEST HOUSES WITH FACILITIES BY SELECTED LOCAL GOVERNMENT AREAS,  
NORTHERN TERRITORY

Particulars	Darwin City (a)	Alice Springs (T)	Katherine (T)	Tennant Creek (T)
ESTABLISHMENTS, CAPACITY AND EMPLOYMENT				
<i>September quarter 1996—</i>				
Establishments	28	22	7	4
Guest rooms	1,988	1,571	410	192
Bed spaces	5,618	4,787	1,287	513
Employment (persons)	1,583	786	280	52
<i>September quarter 1997—</i>				
Establishments	32	22	7	4
Guest rooms	2,472	1,586	406	192
Bed spaces	6,959	4,742	1,267	514
Employment (persons)	1,424	785	313	55
ROOM NIGHTS OCCUPIED				
<i>September quarter 1996</i>	151,409	86,863	27,960	9,159
<i>1997—</i>				
July	61,508	30,485	10,893	3,334
August	60,771	27,489	10,486	3,042
September	45,690	27,228	8,828	2,304
<i>September quarter 1997</i>	167,969	85,202	30,207	8,680
ROOM OCCUPANCY RATES (per cent)				
<i>September quarter 1996</i>	82.8	60.1	74.1	51.9
<i>1997—</i>				
July	80.3	62.0	86.5	56.0
August	79.3	55.9	83.3	51.1
September	61.6	57.2	72.5	40.0
<i>September quarter 1997</i>	73.9	58.4	80.9	49.1
GUEST NIGHTS				
<i>September quarter 1996</i>	252,681	152,177	49,575	16,217
<i>1997—</i>				
July	102,796	57,499	20,535	6,318
August	99,762	48,098	17,753	5,272
September	71,939	48,370	13,715	3,895
<i>September quarter 1997</i>	274,497	153,967	52,003	15,485
BED OCCUPANCY RATES (per cent)				
<i>September quarter 1996</i>	48.9	34.6	41.9	34.4
<i>1997—</i>				
July	47.7	39.1	52.3	39.7
August	46.2	32.7	45.2	33.1
September	34.5	34.0	36.1	25.3
<i>September quarter 1997</i>	42.9	35.3	44.6	32.7
GUEST ARRIVALS				
<i>September quarter 1996</i>	111,778	70,710	30,070	13,754
<i>1997—</i>				
July	37,648	28,950	10,490	5,485
August	38,113	25,125	9,939	4,481
September	30,112	24,037	7,899	3,062
<i>September quarter 1997</i>	105,873	78,112	28,328	13,028
AVERAGE LENGTH OF STAY (days)				
<i>September quarter 1996</i>	2.3	2.2	1.6	1.2
<i>September quarter 1997</i>	2.6	2.0	1.8	1.2
TAKINGS FROM ACCOMMODATION (\$'000)				
<i>September quarter 1996</i>	16,615	6,070	1,809	564
<i>1997—</i>				
July	6,503	2,162	734	214
August	6,566	2,015	660	194
September	4,550	1,896	509	144
<i>September quarter 1997</i>	17,619	6,073	1,904	553

(a) As there are no in-scope establishments outside the Darwin City boundaries, data for Darwin Statistical Division are the same as for Darwin City.

TABLE 8 — HOLIDAY FLATS, UNITS AND HOUSES BY SELECTED AREAS, NORTHERN TERRITORY

<i>Particulars</i>	<i>Darwin (C)-Inner</i>	<i>Balance</i>	<i>Northern Territory</i>
LETTING ENTITIES, CAPACITY AND EMPLOYMENT			
<i>September quarter 1996—</i>			
Letting entities	4	8	12
Flats, units and houses			
Single bedroom	14	145	159
Multiple bedroom	88	72	160
<i>Total flats, units and houses</i>	<i>102</i>	<i>217</i>	<i>319</i>
Bed spaces	382	842	1,224
Employment (persons) (a)	21	48	69
<i>September quarter 1997—</i>			
Letting entities	4	9	13
Flats, units and houses			
Single bedroom	14	149	163
Multiple bedroom	88	83	171
<i>Total flats, units and houses</i>	<i>102</i>	<i>232</i>	<i>334</i>
Bed spaces	382	905	1,287
Employment (persons) (a)	21	49	70
UNIT NIGHTS OCCUPIED			
<i>September quarter 1996</i>	<i>7,231</i>	<i>16,904</i>	<i>24,135</i>
<i>1997—</i>			
July	2,544	6,301	8,845
August	2,436	5,447	7,883
September	1,854	4,481	6,335
<i>September quarter 1997</i>	<i>6,834</i>	<i>16,229</i>	<i>23,063</i>
UNIT OCCUPANCY RATES (per cent)			
<i>September quarter 1996</i>	<i>77.1</i>	<i>84.7</i>	<i>82.2</i>
<i>1997—</i>			
July	80.5	87.6	85.4
August	77.0	75.7	76.1
September	60.6	64.4	63.2
<i>September quarter 1997</i>	<i>72.8</i>	<i>76.0</i>	<i>75.1</i>
UNIT LETTINGS			
<i>September quarter 1996</i>	<i>1,585</i>	<i>4,631</i>	<i>6,216</i>
<i>1997—</i>			
July	581	1,966	2,547
August	507	1,988	2,495
September	354	1,413	1,767
<i>September quarter 1997</i>	<i>1,442</i>	<i>5,367</i>	<i>6,809</i>
AVERAGE LENGTH OF STAY (days)			
<i>September quarter 1996</i>	<i>4.6</i>	<i>3.7</i>	<i>3.9</i>
<i>1997—</i>			
July	4.4	3.2	3.5
August	4.8	2.7	3.2
September	5.2	3.2	3.6
<i>September quarter 1997</i>	<i>4.7</i>	<i>3.0</i>	<i>3.4</i>
TAKINGS FROM ACCOMMODATION (\$'000)			
<i>September quarter 1996</i>	<i>868</i>	<i>1,346</i>	<i>2,214</i>
<i>1997—</i>			
July	316	494	809
August	309	462	770
September	201	335	535
<i>September quarter 1997</i>	<i>825</i>	<i>1,290</i>	<i>2,115</i>

(a) Employment numbers exclude real estate agents and their employees.

TABLE 9 — CARAVAN PARKS BY STATISTICAL AREA AND TYPE, NORTHERN TERRITORY

Particulars	Darwin (SD) and Alligator (SSD)	Darwin Rural Areas and Daly (SSDs)	Lower Top End Northern Territory (SSD)	Barkly (SSD)	Central Northern Territory (SSD)	Northern Territory		Total
						Short-term parks	Long-term parks	
<b>ESTABLISHMENTS, CAPACITY AND EMPLOYMENT</b>								
<i>September quarter 1996—</i>								
Establishments	9	21	22	9	15	59	17	76
Capacity								
On-site vans	27	174	14	22	79	138	178	316
Other powered sites	1,241	917	840	348	1,023	2,941	1,428	4,369
Unpowered sites	591	465	955	390	1,333	3,228	506	3,734
Cabins, flats, etc.	30	79	93	40	89	249	82	331
<i>Total capacity</i>	<i>1,889</i>	<i>1,635</i>	<i>1,902</i>	<i>800</i>	<i>2,524</i>	<i>6,556</i>	<i>2,194</i>	<i>8,750</i>
Sites occupied by long-term guests	315	368	91	25	215	315	699	1,014
Other sites permanently reserved	—	2	3	1	4	7	3	10
Employment (persons)	45	80	98	45	107	280	95	375
<i>September quarter 1997—</i>								
Establishments	9	22	23	9	16	62	17	79
Capacity								
On-site vans	27	168	14	20	77	130	176	306
Other powered sites	1,263	957	876	336	1,147	3,142	1,437	4,579
Unpowered sites	562	577	1,125	370	1,322	3,476	480	3,956
Cabins, flats, etc.	40	90	134	44	104	303	109	412
<i>Total capacity</i>	<i>1,892</i>	<i>1,792</i>	<i>2,149</i>	<i>770</i>	<i>2,650</i>	<i>7,051</i>	<i>2,202</i>	<i>9,253</i>
Sites occupied by long-term guests	325	375	81	25	247	341	712	1,053
Other sites permanently reserved	—	2	12	7	4	9	16	25
Employment (persons)	48	102	111	49	99	327	82	409
<b>SITE NIGHTS OCCUPIED</b>								
<i>September quarter 1996</i>	<i>94,945</i>	<i>69,647</i>	<i>63,858</i>	<i>19,738</i>	<i>100,320</i>	<i>241,756</i>	<i>106,752</i>	<i>348,508</i>
<i>1997—</i>								
July	39,793	30,480	28,403	9,921	35,550	104,611	39,536	144,147
August	34,978	25,267	21,281	7,265	30,927	83,219	36,499	119,718
September	22,844	17,223	13,670	5,150	27,502	57,057	29,332	86,389
<i>September quarter 1997</i>	<i>97,615</i>	<i>72,970</i>	<i>63,354</i>	<i>22,336</i>	<i>93,979</i>	<i>244,887</i>	<i>105,367</i>	<i>350,254</i>
<b>SITE OCCUPANCY RATES (per cent)</b>								
<i>September quarter 1996</i>	<i>54.6</i>	<i>46.3</i>	<i>36.5</i>	<i>26.8</i>	<i>43.2</i>	<i>40.1</i>	<i>52.9</i>	<i>43.3</i>
<i>1997—</i>								
July	67.8	58.7	42.6	41.6	43.3	48.7	57.9	50.9
August	59.6	45.5	31.9	30.4	37.6	38.1	53.5	41.7
September	40.2	32.0	21.2	22.3	34.6	27.0	44.4	31.1
<i>September quarter 1997</i>	<i>56.1</i>	<i>45.2</i>	<i>32.0</i>	<i>31.5</i>	<i>38.5</i>	<i>38.0</i>	<i>52.0</i>	<i>41.3</i>
<b>TAKINGS FROM ACCOMMODATION (\$'000)</b>								
<i>September quarter 1996</i>	<i>940</i>	<i>947</i>	<i>1,133</i>	<i>327</i>	<i>1,972</i>	<i>3,962</i>	<i>1,357</i>	<i>5,319</i>
<i>1997—</i>								
July	419	430	489	158	900	1,891	505	2,396
August	348	357	361	116	671	1,404	451	1,855
September	227	238	224	81	687	1,112	345	1,457
<i>September quarter 1997</i>	<i>994</i>	<i>1,026</i>	<i>1,074</i>	<i>355</i>	<i>2,258</i>	<i>4,407</i>	<i>1,301</i>	<i>5,708</i>

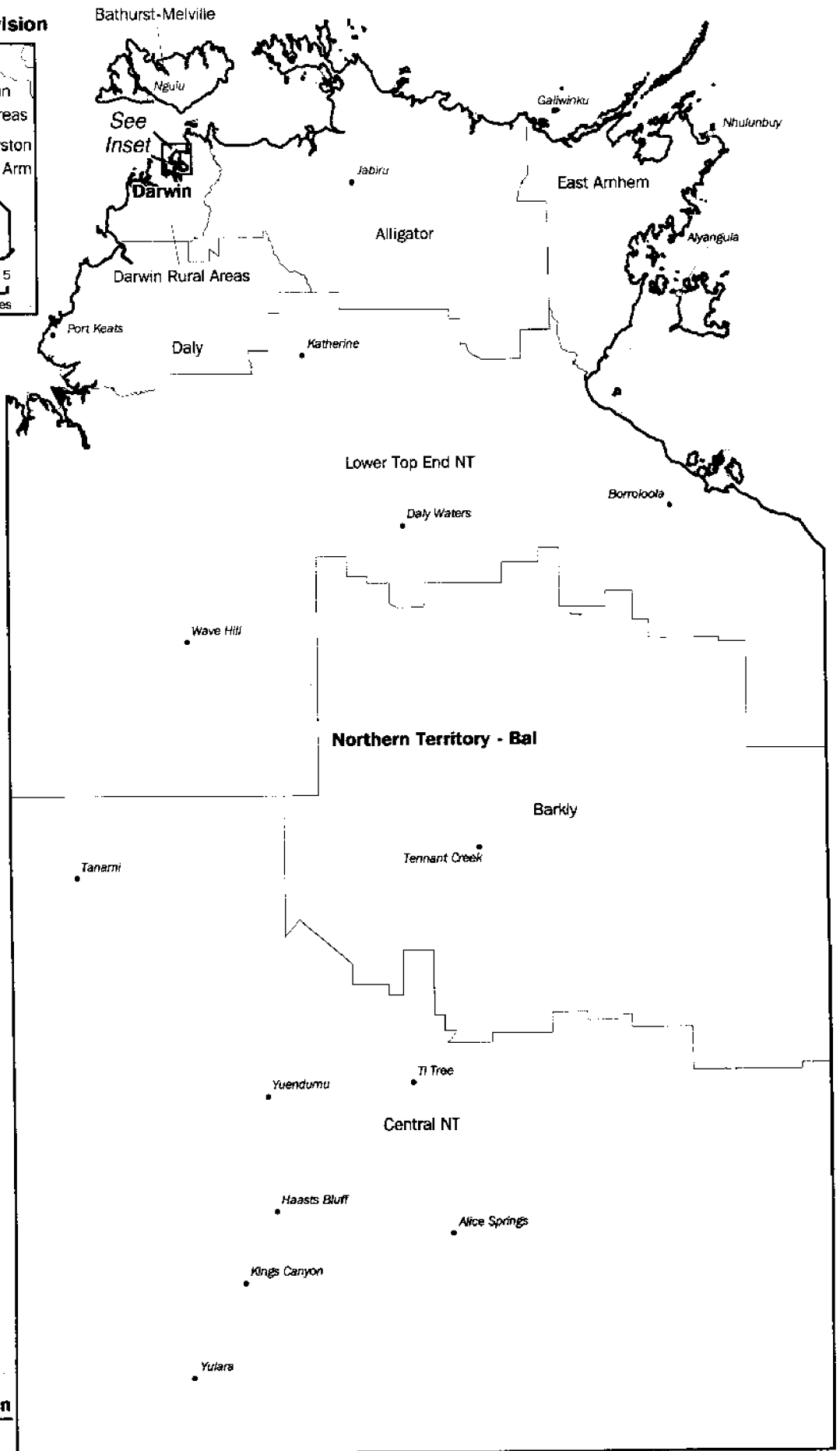
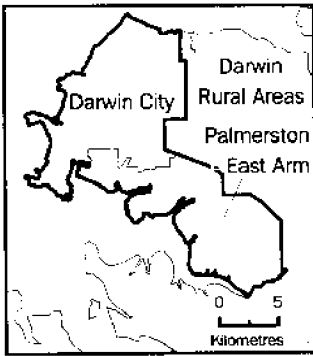
TABLE 10 — VISITOR HOSTELS BY STATISTICAL DIVISION AND SELECTED AREAS, NORTHERN TERRITORY

Particulars	Northern Territory - Balance (SD)					Northern Territory
	Darwin (SD)	Katherine (T)	Alice Springs (T)	Balance	Total	
<b>ESTABLISHMENTS, CAPACITY AND EMPLOYMENT</b>						
<i>September quarter 1996—</i>						
Establishments	10	3	8	13	24	34
Bed spaces	1,252	185	945	702	1,832	3,084
Employment (persons)	57	9	46	56	111	168
<i>September quarter 1997—</i>						
Establishments	10	3	8	13	24	34
Bed spaces	1,253	189	915	926	2,030	3,283
Employment (persons)	59	11	45	58	114	173
<b>GUEST NIGHTS</b>						
<i>September quarter 1996</i>	80,985	11,373	48,146	32,434	91,953	172,938
<i>1997—</i>						
July	28,656	4,680	18,149	15,040	37,869	66,525
August	28,807	4,309	16,339	13,688	34,336	63,143
September	22,147	3,597	15,224	11,101	29,922	52,069
<i>September quarter 1997</i>	79,610	12,586	49,712	39,829	102,127	181,737
<b>BED OCCUPANCY RATES (per cent)</b>						
<i>September quarter 1996</i>	70.3	66.8	55.4	50.2	54.6	61.0
<i>1997—</i>						
July	73.8	79.9	64.0	52.4	60.2	65.4
August	74.2	73.5	57.6	47.7	54.6	62.0
September	58.9	63.4	55.5	40.0	49.1	52.9
<i>September quarter 1997</i>	69.1	72.4	59.1	46.8	54.7	60.2
<b>GUEST ARRIVALS</b>						
<i>September quarter 1996</i>	30,356	7,699	23,222	24,460	55,381	85,737
<i>1997—</i>						
July	11,787	2,189	12,804	10,853	25,846	37,633
August	11,573	2,159	10,802	10,038	22,999	34,572
September	9,468	1,754	9,990	8,275	20,019	29,487
<i>September quarter 1997</i>	32,828	6,102	33,596	29,166	68,864	101,692
<b>AVERAGE LENGTH OF STAY (days)</b>						
<i>September quarter 1996</i>	2.7	1.5	2.1	1.3	1.7	2.0
<i>1997—</i>						
July	2.4	2.1	1.4	1.4	1.5	1.8
August	2.5	2.0	1.5	1.4	1.5	1.8
September	2.3	2.1	1.5	1.3	1.5	1.8
<i>September quarter 1997</i>	2.4	2.1	1.5	1.4	1.5	1.8
<b>TAKINGS FROM ACCOMMODATION (\$'000)</b>						
<i>September quarter 1996</i>	1,101	143	521	623	1,287	2,388
<i>1997—</i>						
July	397	60	208	325	592	989
August	390	58	195	296	548	939
September	330	48	181	232	462	791
<i>September quarter 1997</i>	1,116	166	583	853	1,603	2,719

# Statistical Divisions and Statistical Subdivisions, Northern Territory, 1996

## Inset

### Darwin Statistical Division



Statistical Subdivision Daly

Statistical Division **Darwin**



## EXPLANATORY NOTES

.....

### INTRODUCTION

**1** This publication contains data for the Northern Territory from a quarterly survey of tourist accommodation establishments.

### SCOPE

**2** Tourist accommodation establishments currently included in the survey comprise two groups:

- Establishments which provide predominantly short-term accommodation (i.e. for periods of less than 2 months) to the general public. These include:
  - *Hotels, motels and guest houses, with facilities* being hotels licensed to operate a public bar and motels, private hotels and guest houses all of which provide a bath (or shower) and toilet in most guest rooms and have breakfast available for guests. NOTE: From December quarter 1993, hotel, motel and guest house establishments with fewer than five rooms have been formally excluded from the scope of this statistical collection.
  - *Holiday flats, units and houses* (excluding establishments predominantly operated on a time share basis) which are operated by owners, managers or real estate agents who have sole letting rights to at least five flats, units or houses for short-term letting. They are mainly self-contained in terms of cooking, bath (or shower) and toilet facilities and do not have breakfast available for guests. Data for holiday flats, units and houses include short-term owner occupation as well as paying guest occupation.
  - *Visitor hostels* which provide accommodation to visitors on a bed basis (rather than by the room). This category does not include establishments providing charity type accommodation (e.g. Salvation Army hostels) nor hotels, motels and guest houses without in-room facilities which provide accommodation on a per room basis.
  - *Caravan parks* which provide either predominantly short-term (i.e. for periods of less than 2 months) or predominantly long-term (i.e. for periods of 2 months or more) accommodation to the general public and which provide powered sites for caravans and toilet, shower and laundry facilities for guests.

**3** Data collected and published for each type of establishment (other than holiday flats, units and houses) include both long-term and short-term guests at these establishments.

**4** Establishments which provide more than one type of accommodation (e.g. a motel with attached caravan park) are treated as two or more separate establishments. However, self-contained units, flats, cabins, etc. attached to hotels, motels or to caravan parks are included in the capacity for those establishments and not treated as separate holiday flat, unit or house establishments.

### AUSTRALIAN STANDARD

### GEOGRAPHICAL CLASSIFICATION

**5** Statistics presented in this publication have been classified according to the Australian Standard Geographical Classification (ASGC), Edition 1996. This classification incorporates a number of hierarchic structures of geographic areas. The appropriate spatial units of the main structure of the ASGC used in this publication are defined as follows.

## EXPLANATORY NOTES

---

AUSTRALIAN STANDARD  
GEOGRAPHICAL CLASSIFICATION  
*continued*

- Statistical Local Areas (SLAs) are legal Local Government Areas or equivalent spatial units which serve as the smallest type of spatial unit considered appropriate for the presentation of statistics and add, without gaps or overlaps, to;
- Statistical Subdivisions (SSDs) which in turn represent another, higher hierarchic level and add, without gaps or overlaps, to;
- Statistical Divisions (SDs) which in turn add, without gaps or overlaps, to:  
*The Northern Territory.*

For more detailed information, refer to the ASGC (1216.0).

The Northern Territory comprises three SDs, i.e. Darwin, Northern Territory Balance, and Offshore Areas and Migratory. Only the first two of these units are appropriate for the presentation of statistics in this publication and together add to the Northern Territory.

UNPUBLISHED STATISTICS

**6** The ABS may make available on request certain unpublished tourist accommodation statistics. A charge may be made for this information.

RELATED PUBLICATIONS

**7** Publications for Australia, and each State and Territory, are released by the respective offices of the ABS. Tourist accommodation statistics for past quarters are available on request. Other ABS publications which may be of interest include:

- *Directory of Tourism Statistics* (1130.0) (irregular: latest issue; 1997)
- *Overseas Arrivals and Departures, Australia* (3401.0) (issued monthly)
- *Tourism Indicators, Australia* (8634.0) (issued quarterly)
- *Tourist Accommodation, Australia* (8635.0) (issued quarterly)

**8** Current publications produced by the ABS are listed in the *Catalogue of Publications and Products* (1101.0). The ABS also issues the *Release Advice* (1105.0) on Tuesdays and Fridays which lists publications to be released in the next few days. Both the *Catalogue* and *Release Advice* are available from any ABS office.

EFFECTS OF ROUNDING

**9** Where figures have been rounded, discrepancies may occur between totals and the sums of the component items.

SYMBOLS AND OTHER USAGES

- .. not applicable
- nil or rounded to zero
- n.a. not available
- n.p. not available for publication but included in totals where applicable
- r revised
- (T) Town

## G L O S S A R Y

.....

<b>Average length of stay</b>	<p>Average length of stay is expressed in numbers of days and calculated:</p> <ul style="list-style-type: none"> <li>▪ for hotels, motels and guest houses, by dividing <i>Guest nights</i> by <i>Guest arrivals</i> and</li> <li>▪ for holiday flats, units and houses, by dividing <i>Unit nights occupied</i> by <i>Unit lettings</i>.</li> </ul>
<b>Bed spaces</b>	<p>Three-quarter beds are counted as one bed space; double beds as two bed spaces. Cots are excluded.</p>
<b>Capacity</b>	<p>Capacity in terms of <i>Guest rooms</i>, <i>Bed spaces</i>, <i>Holiday units</i> or <i>Caravan park sites</i>, etc. is the maximum number available to accommodate paying guests during the survey period. Capacity closed temporarily for seasonal reasons is included.</p>
<b>Caravan park capacity</b>	<p>The total number of <i>On-site vans</i>, <i>Other powered sites</i>, <i>Unpowered sites</i> and <i>Cabins</i>, etc.</p>
<b>Employment</b>	<p>The number of persons working at accommodation establishments at the end of the survey period (including working proprietors and those working on other than accommodation activities).</p>
<b>Establishments</b>	<p>For hotels, motels and guest houses, caravan parks and visitor hostels, the number of establishments within the scope of the survey which operated for any part of the survey period, or which closed temporarily for the quarter for seasonal reasons.</p>
<b>Guest arrivals</b>	<p>The total number of paying guests counted only on the first night they stayed at the accommodation establishment.</p>
<b>Letting entities</b>	<p>For holiday flats, units and houses, the number of owners, managers or real estate agents within the scope of the survey who operated for any part of the survey period.</p>
<b>Occupancy</b>	<p>Occupancy in terms of <i>Room nights</i>, <i>Unit nights</i> or <i>Site nights occupied</i> refers to the total number of nights each guest room, holiday unit or caravan park site, etc. was occupied during the survey period. NOTE: From September quarter 1992, caravan park sites, etc. permanently reserved for 2 months or more at the end of the survey period but only casually occupied by their tenants have been recorded continuously as <i>Site nights occupied</i> irrespective of whether the tenants of individual sites were in residence on any particular night.</p> <p>Occupancy in terms of <i>Guest nights</i> refers to the total number of nights each paying guest stayed during the survey period.</p>
<b>Occupancy rates</b>	<p><i>Occupancy rates</i> represent occupancy expressed as a percentage of total capacity available during the survey period, e.g.</p>

$$\text{Room occupancy rate (\% for the period)} = \frac{\text{Room nights occupied}}{(\text{Guest rooms}) \times (\text{No. of days in the period})} \times 100$$

providing that, for establishments closing (other than for seasonal reasons) or opening during the survey period, the denominator of the above expression includes only operating periods.

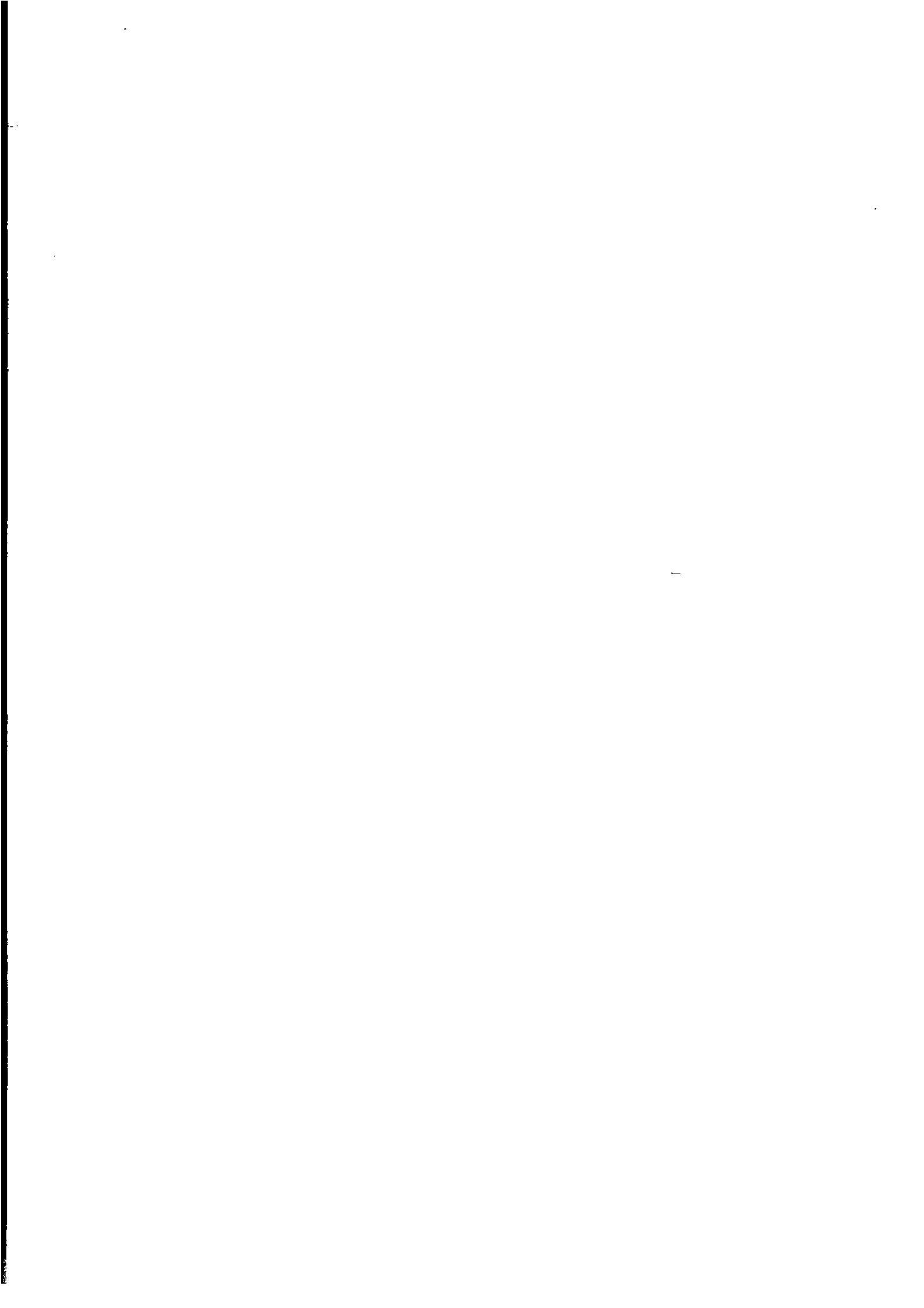


## GLOSSARY

.....

- Other sites permanently reserved** The total number of powered and unpowered sites, on-site vans and cabins, etc. continuously let for 2 months or more by the end of the survey period to tenants who occupy the sites only on a casual or sporadic basis. Separate data for this item are available only from September quarter 1992.
- Room nights available** The number of guest rooms available multiplied by the number of days for which they were available during the survey period. For establishments closing (other than for seasonal reasons) or opening during the survey period, operating periods only are included.
- Sites occupied by long-term guests** The total number of sites, etc. occupied at the end of the survey period by guests who have stayed continuously for 2 months or more.
- Star grading** The grading of hotels and motels with facilities based on the classification system used by members of the Australian Automobile Association (AAA). The gradings are allocated according to a points system based on the amenities and facilities available to guests. Details of the grading scheme are contained in the RACV-RAASA members' publication *Accommodation Australia*, or the individual tour guides produced by members of the AAA. For the purpose of classifying establishments to a star grading in this publication, 'half' star gradings are ignored (e.g. a two and a half star grading has been shown as two star).
- Takings from accommodation** Revenue received from the provision of accommodation. Takings from meals are excluded. Takings from accommodation for each month generally represent the takings received during that month. Where payments are received in advance of, or after, the provision of accommodation to guests, the monthly figure for takings from accommodation may not necessarily bear a direct relationship to the number of guests accommodated during the month. Rental and storage fees paid to caravan parks for the keeping of private vans in parks are included in the takings of the month they are received.
- Unit lettings** The total number of times a holiday flat, unit or house was occupied by a new tenant, counted only on the first night it was occupied by the new tenant.







## FOR MORE INFORMATION . . .

The ABS publishes a wide range of information on Australia's economic and social conditions. A catalogue of publications and products is available from any of our offices (see below).

### INFORMATION CONSULTANCY SERVICES

Information tailored to special needs of clients can be obtained from the Information Consultancy Service available at ABS Offices (see below).

### ABS PRODUCTS

A large number of ABS products is available from the ABS Bookshops (see below). The ABS also provides a subscription service – you can telephone the ABS Subscription Service Australia wide toll free on 1300 3663 23.

### ELECTRONIC SERVICES

A large range of data is available via on-line services, diskette, magnetic tape, tape cartridge and CD ROM. For more details about our electronic data services, contact any ABS office (see below) or e-mail us at:

- [client.services@abs.gov.au](mailto:client.services@abs.gov.au)

### GENERAL SALES AND INQUIRIES

- Sydney 02 9268 4611
- Melbourne 03 9615 7755
- Brisbane 07 3222 6351
- Perth 08 9360 5140
- Adelaide 08 8237 7100
- Hobart 03 6222 5800
- Darwin 08 8943 2111
- Canberra 02 6252 6627
- Information Services, ABS  
PO Box 10, Belconnen ACT 2616



2863570009976

ISSN 0157-1354

RRP \$16.00

© Commonwealth of Australia 1997

Produced by the Australian Bureau of Statistics